



# ANTON<sup>®</sup> BAUER

Mobile Power. Perfected.

ELORA™ 240 BATTERY  
Owner's Manual



# CONTENTS



3	IMPORTANT READ AND UNDERSTAND THIS MANUAL BEFORE OPER- ATION
4	OPERATING GUIDELINES
5	SERVICE
5	WARNINGS
6	PRECAUTIONS
7	SPECIFICATIONS
8	WARRANTY
9	AIR TRANSPORTATION REGULATION



# IMPORTANT



## READ AND UNDERSTAND THIS MANUAL BEFORE OPERATION!

The ELORA™ 240 battery is specifically designed and optimized for the Elora Battery Interface and Charging Cabinet. Do not attempt to use a charger not manufactured by Anton/Bauer with this product.

Special precautions and handling instructions are contained in this manual and should be strictly adhered to for safe and reliable operation. Contact Anton/Bauer Customer Support Group at (203) 925-4991 or [servicesupport@vitecgroup.com](mailto:servicesupport@vitecgroup.com) with any questions regarding this product.

### Anton/Bauer Customer Support Group

[servicesupport@vitecgroup.com](mailto:servicesupport@vitecgroup.com)  
(800) 541-1667 or (203) 925-4991

# OPERATING GUIDELINES

## 1. STORAGE

Keep batteries cool or at room temperatures whenever possible. Sustained elevated temperatures are the primary reason for premature failure of batteries:

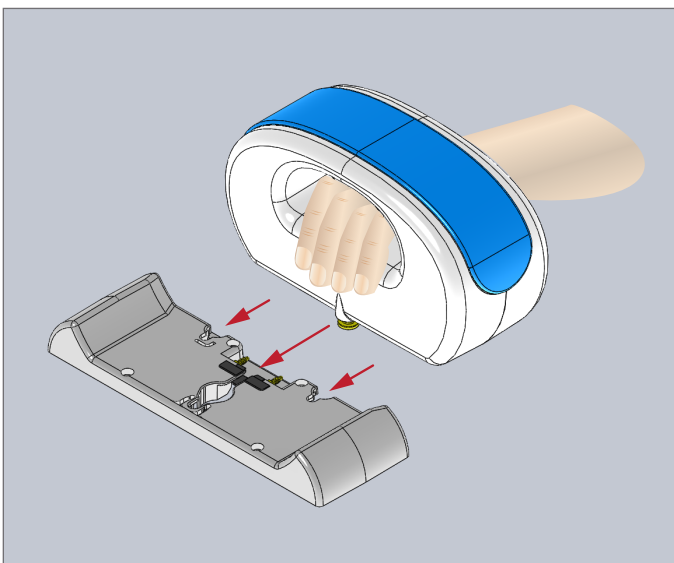
A. Charge batteries at room temperature. In warm climate keep chargers in air conditioned rooms for best performance.

B. Although Lithium-Ion has good self-discharge characteristics, batteries should be stored for long term storage in a fully charged condition.

C. Batteries should always be stored in a fully charged state and kept cool. If batteries must be stored for a long period (over 30 days), the battery electronics will enter a “deep sleep” mode. The battery will “wake up” when placed on a charger. It is always a good idea to submit the battery to a discharge/charge cycle from time to time during storage.

## 2. BATTERY MOUNTING/REMOVAL

Battery should be mounted and removed from bracket as depicted in the diagram:



## 3. MAINTENANCE

Weekly, or as needed:

- Clean the device, associated components, and accessories as needed with a damp, non-saturated cloth or paper towel. Do not wet the exposed metal part of the battery charge terminals. Do not use solvents or scouring agents. Examples of approved solvents are Cidex<sup>®</sup> and Windex<sup>®</sup>. Consult Anton/Bauer Customer Support Group for approved list of cleaning agents.
- Periodic cleaning of the battery terminals will ensure continued reliable operation. Clean the terminals occasionally with a pencil eraser or lightly scrape the surface with a blunt instrument to help reduce the likelihood of buildup causing poor communication or charging.
- Contact Anton/Bauer Customer Support Group with additional inquiries as to maintenance.

# SERVICE / WARNINGS

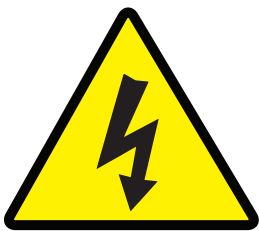


## SERVICE

In the event the Elora™ 240 battery fails to deliver acceptable performance, it must be returned to Anton/Bauer. No other facility is qualified and equipped to service the Elora™ 240 battery and calibrate the electronic components and sensors. Any attempt by the user or any other unauthorized persons may result in improper calibration of the electronic components causing severe battery damage and/or safety hazards, including potential personal injury and/or damage to property. Any such attempt will void any/all warranties.

Anton/Bauer Customer Support  
Group

servicesupport@vitecgroup.com  
(800) 541-1667 or (203) 925-4991



## WARNINGS

1. NEVER attempt to service this battery. If there is a problem, send this battery only to Anton/Bauer for evaluation.
2. NEVER ATTEMPT TO OPEN THIS BATTERY. The electronic circuits inside the battery can be damaged causing malfunction and/or potential hazard to person and property.
3. NEVER attempt to replace the cells in this battery – it cannot be rebuilt or refurbished. At the end of its useful life contact the Anton/Bauer Customer Support Group at servicesupport@vitecgroup.com or (800) 541-1667 or (203) 925-4991.

# PRECAUTIONS

## CAUTION!

1. Do not expose this battery to extreme high (above 50°C/120°F) or low (-20° C) temperatures. This includes storage in direct sunlight, in cars in hot or cold weather, or in close proximity to heating/cooling devices. This may cause electrolyte leakage, impaired performance and shortening of battery service life.
2. When not using the battery for prolonged periods, the Elora™ 240battery should be fully charged.
3. ALL LITHIUM-ION BATTERIES have a finite life. If the battery exhibits noticeably shortened run-time the battery should be replaced immediately. Shortened run-time is indicative of at least one cell which has reached end of life. UNDER NO CIRCUMSTANCES should one attempt to “recondition” this battery by repeated charging and discharging.
4. This battery contains specialized electronic circuits, which are designed to protect the Lithium-Ion cells from overcharge, over discharge and overcurrent. Redundant protection devices are designed to operate if the battery voltage is abnormally high or low and if the temperature of the battery exceeds operating specifications. These electronic devices can be damaged if the battery is subject to abuse or damage. Do not use a battery that has been subjected to excessive mechanical shock or water damage.
5. Do not drop, puncture or crush this battery. Do not use the battery if the case is damaged or broken. Do not open or attempt to service this battery if damaged.

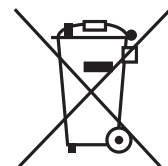


Anton/Bauer Customer Support  
Group

servicesupport@vitecgroup.com  
(800) 541-1667 or (203) 925-4991

# SPECIFICATIONS

OUTPUT VOLTAGE	14.4V Nominal 10.0–16.8V Operating
CAPACITY	Nominal minimum 16.2 Ah, Nominal Typical 17.1 Ah
MAXIMUM DISCHARGE RATE	10A
TYPICAL RUN-TIME (ASSUMING CONSTANT LOAD)	@20w – 11.0 hrs @25w – 9.0 hrs @40w – 5.5 hrs @60w – 3.5 hrs
WEIGHT	4.0 lbs (1.8kg)
SIZE	199.4mm (L) x 82.4mm (W) x 121.6mm (H)
OPERATING TEMPERATURE	-10 ~ +60°C Discharge 0 ~ +45°C Charge



# WARRANTY

**ANTON  
BAUER**<sup>®</sup>  
Mobile Power. Perfected.

This warranty for the product specified in this document ("Product") is given by Vitec Videocom, Inc. ("Anton/Bauer"), 14 Progress Drive, Shelton, Connecticut 06484. If you (the purchaser of the Product from Anton/Bauer, or the person for whom the Product was purchased, if it was a gift) have any questions regarding Product applications, Product specification, or to obtain warranty service on this or any Anton/Bauer product, contact the company at the address above.

THIS PRODUCT MUST BE REGISTERED WITH ANTON/BAUER WITHIN 30 DAYS OF PURCHASE TO ASSURE WARRANTY COVERAGE.

REGISTER ONLINE AT [www.antonbauer.com](http://www.antonbauer.com)

Warranty registration, including the serial numbers of Anton/Bauer chargers used with this battery, must be supplied to Anton/Bauer. Anton/Bauer will warranty the Product only against defects in material and workmanship for the period as follows from the date of purchase, in accordance with the terms set forth below, and then, only if the Product is used exclusively in conjunction with compatible Anton/Bauer chargers. If this battery is returned to Anton/Bauer for warranty service it will be required that you provide model names and serial numbers of compatible Anton/Bauer chargers with which this product was used.

## ELORA™ 240 BATTERY

1000 cycles or 24 months: Anton/Bauer will repair or replace the Product at Anton/Bauer's option and cost.

This warranty shall be effective only if Anton/Bauer receives notice of such defects in materials or workmanship during the period of the warranty. Minimum battery capacity is defined under this warranty as 60% of nominal specified capacity for this Product at time of purchase.

The liability of Anton/Bauer hereunder is expressly limited to a claim for repair or replacement of the Product or as otherwise stated herein at Anton/Bauer's sole discretion. Notice of any claim under this warranty shall be delivered to Anton/Bauer during the period of the warranty and the Product shall be returned with its packaging promptly, at your expense, to an Anton/Bauer Customer Support Center or to the address above. Upon receipt of the Product and a record of your compliance with the conditions of this warranty, Anton/Bauer will repair or replace the Product and return it to you, or issue a credit, as applicable. You are responsible for all shipping and handling charges to and from authorized facility.

THIS WARRANTY DOES NOT APPLY TO AND IS VOID IN THE CASE OF DEFECTS OR DAMAGE RESULTING FROM ACCIDENTS, DISASTER, NEGLIGENCE, MISUSE, IMPROPER INSTALLATION, IMPROPER OR UNAUTHORIZED

SERVICE OR MAINTENANCE, UNAUTHORIZED REPLACEMENT PARTS OR ATTACHMENTS; OR DYSFUNCTION OR MALFUNCTION OF, OR CAUSED BY, ANY OTHER PRODUCT OR DEVICE. Misuse includes any use of the Product in other than its intended application, including the use of this Product with any charging device or accessory not manufactured by and/or specified by Anton/Bauer. This warranty does not cover, and Anton/Bauer assumes no responsibility for, any equipment or devices used in conjunction with the Product.

ANTON/BAUER DISCLAIMS ANY LIABILITY FOR INCIDENTAL OR CONSEQUENTIAL DAMAGES FOR BREACH OF ANY WRITTEN OR IMPLIED WARRANTY OF THE PRODUCT. UNDER NO CIRCUMSTANCES WILL ANTON/BAUER BE RESPONSIBLE FOR ANY SPECIAL, INCIDENTAL OR CONSEQUENTIAL DAMAGES.

This Warranty is to be construed and enforced in accordance with the law of the State of Connecticut, including the provisions of the Uniform Commercial Code as adopted and from time to time amended in the State of Connecticut, and not the Convention for the International Sale of Goods. This choice of Connecticut law is exclusive of any Connecticut law that would require reliance on any law foreign to Connecticut. Should any action of law or in equity be brought by any person under this Warranty, such action shall be brought only in the United States District Court for the District of Connecticut, or in any Superior Court in Fairfield County, Connecticut, USA. Some states do not allow limitations on how long a warranty lasts, so the time period limitation herein may not apply to you. Some states do not allow the exclusion or limitation of incidental or consequential damages, so the above limitation or exclusion may not apply to you. This warranty gives you specific legal rights and you may have other legal rights which may vary from state to state.

Use of unauthorized equipment in conjunction with Anton/Bauer products constitutes misuse under our warranties and may limit or void those warranties. Anton/Bauer does not authorize, condone, recommend, or otherwise assume any liability or responsibility resulting from the use of any battery, charger, or accessory made by Anton/Bauer with any battery, charger or accessory not manufactured, produced or sold by Anton/Bauer. Anton/Bauer only authorizes the use of original Anton/Bauer products with this Product. Use only original Anton/Bauer equipment with this Product.



# AIR TRANSPORTATION REGULATION



## AIR TRANSPORTATION REGULATION

Dangerous Goods Regulations 49CFR Parts 100-185, Air Transport Association (IATA) and the International Civil Aviation Organization (ICAO) regulations apply to all Lithium-Ion battery transport.

## AIR TRANSPORTATION DECLARATION

Vitec Videocom, Inc. declares that the Elora™ 240 Lithium-Ion battery pack contains equivalent lithium content (ELC) in a quantity exceeding 8 grams and less than 25 grams and therefore is considered and must be handled and transported as a class 9 Hazardous article and is subject to regulation under Dangerous Good Regulations.

## 49 CFR PARTS 100-185

Since the interpretation and application of regulations may vary with the aviation company, the transport of the Elora™ 240 may be disallowed even when the condition described above are satisfied. Anton/Bauer therefore strongly recommends that you consult with your transportation company prior to transporting the battery pack.

Anton/Bauer Customer Support  
Group

servicesupport@vitecgroup.com  
(800) 541-1667 or (203) 925-4991

Anton/Bauer Customer Support Group

[servicesupport@vitecgroup.com](mailto:servicesupport@vitecgroup.com)

(800) 541-1667 or (203) 925-4991

**ANTON<sup>®</sup>**  
**BAUER**  
Mobile Power. Perfected.

Call 1-800-541-1667 or (203) 925-4991 or email us at [servicesupport@vitecgroup.com](mailto:servicesupport@vitecgroup.com)

Visit our website at [www.antonbauer.com](http://www.antonbauer.com)

14 Progress Drive, Shelton, CT 06484 USA

Copyright 2014 Vitec Group. All rights reserved.