



Hummingbird

Medical Workstation on Wheels



Laptop



Powered



Electric Lift



Smart Drawers



Amico

Patient



Improved Communication



Increased Treatment Compliance



Enhanced Security



Stronger Outcomes

Practitioner



Increased Workflow Efficiency



Fewer Mistakes



Less Pain



Reduced Fatigue

Technician



Maximal Uptime



Minimal Maintenance



Fleet Management



Multi-Level Support

Management



Reduced Liability



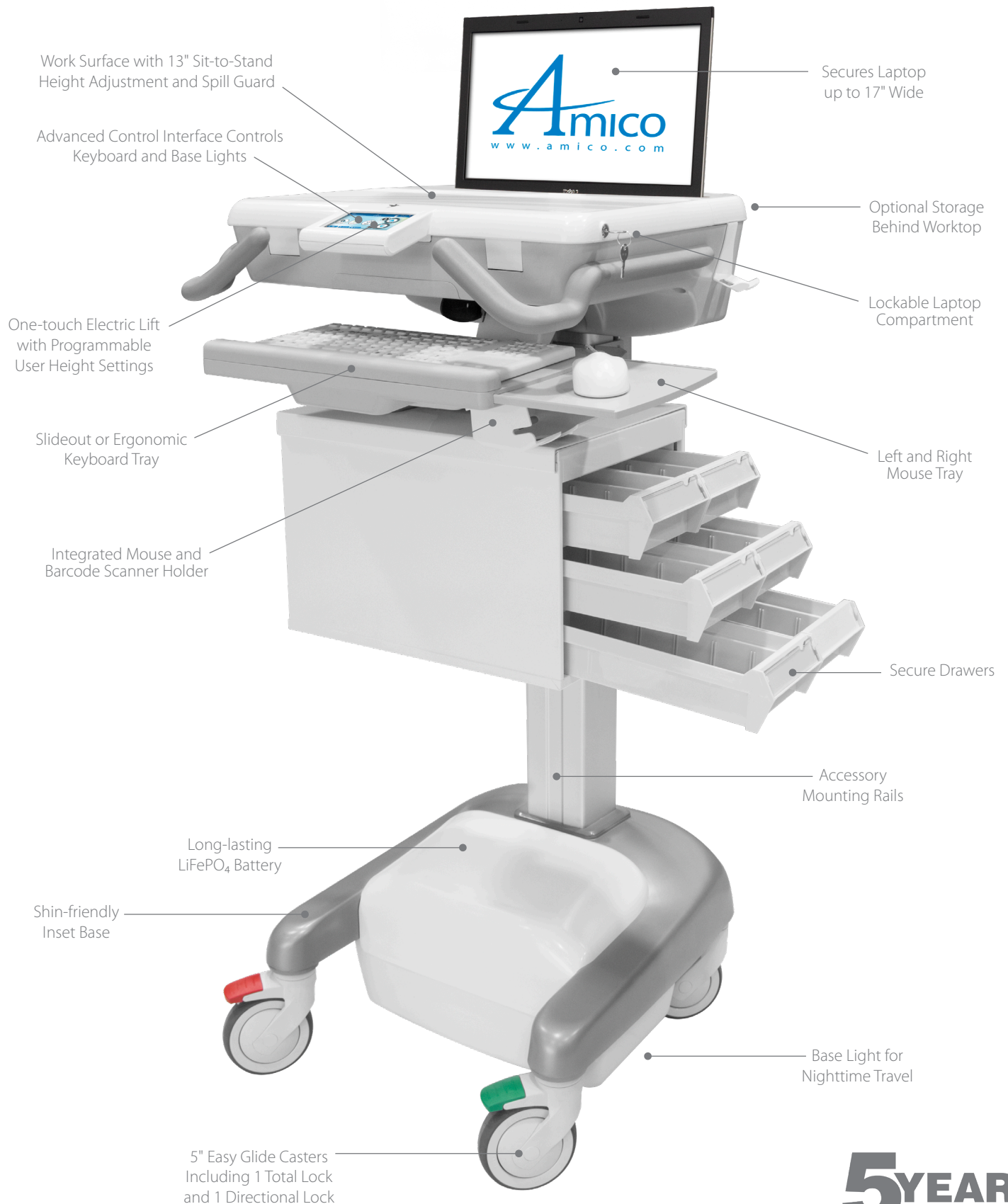
Better Patient Outcomes



Increased Practitioner Productivity



Superior Management and Integration



5YEAR
warranty

Hummingbird Standard Equipment



Worktop

18 sq" (1200 cm²) work surface with 8 fl. oz (236.59 ml) spill guard ideal for documentation and medication preparation



Keyboard Light

Illuminated keyboard allows you to work at night without disturbing your patients



Ergonomic Handles

Optimally oriented handles make maneuvering your cart easy and reduces fatigue



Secure I.T.

Secure your CPU or Laptop in our lockable compartment



Barcode Scanner/Mouse Holder

Place your mouse or barcode scanner underneath the keyboard tray to prevent them from falling during travel



Power Cord

6' (1.83 m) coiled power cord for convenient connection to wall outlet



Cord Holder

Neatly store your power supply cord on the side of the cart



Power Reset

Integrated reset button for rebooting your computer system (requires BIOS setting)



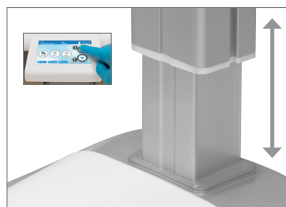
External USB Ports

2 hidden USB ports for connecting auxiliary devices



Accessory Rails

Integrated rails on both sides of the column to easily mount your storage accessories



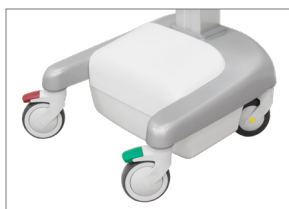
Electric Lift

Sit-to-stand is as easy as pushing a button: 13" (33.02 cm) worktop height adjustment range



Effortless Rolling

5" casters make travel effortless, including directional caster for enhanced steering and total lock caster to stop movement



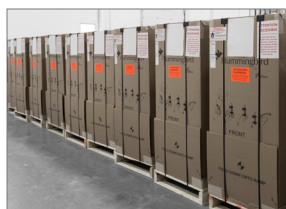
Legroom

U-Shape base saves your shins while traveling and gives users enough legroom while sitting



Base Light

See where you're going with an integrated LED light at the base of the cart



Plug and Play

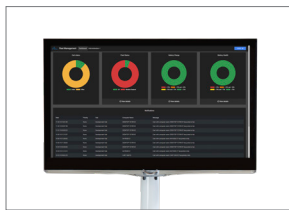
Ships assembled: add your peripherals/accessories and your cart is ready to use



Secure Drawers

A range of drawer configurations and software options to support secure storage

Hummingbird Standard Equipment



Fleet Management

Track the battery status of your entire fleet and receive critical service alerts in real time

Hummingbird Customization Options



LiFePO₄ Battery

3-hour fast charge to ~90% full, 4 hours to full charge from empty
19.2Ahr (230.4WHr)
38.4Ahr (460.8WHr)
57.6Ahr (691.2WHr)



Standard Interface

Controls worktop height, cart lights, and provides battery status and alerts



Advanced Interface

Touchscreen interface displays cart status, customizes user settings, and allows you to control lighting and height



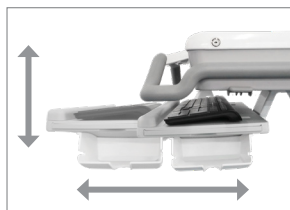
Power System

Power connections available for all countries, choose AC-only or AC/DC power output



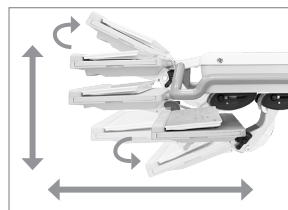
12' Power Cord

12' (3.66 m) extended length power cord for easy access to hard-to-reach outlets



Slideout Keyboard

Pull out or tuck away your keyboard; includes right and left-handed mouse trays



Ergonomic Keyboard Tray

4 ranges of motion such as; tilt, side-to-side, height, and in-and-out for optimal ergonomic positioning and patient orientation

Hummingbird Add-On Accessories

Worktop Accessories



Worktop Light

Light up your worktop for nighttime charting without patient disruption



RFID

RFID embedded in the worktop facilitates secure PC access and enhanced infection control



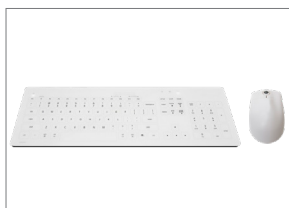
USB Splitter

4-Port USB Splitter for extra devices



USB Extension

Extends the reach of your USB by 3' (91.44 cm)



Antimicrobial Keyboard and Mouse

Antimicrobial keyboard and mouse (ask sales rep for options)



Compartment Fan

Add a fan inside the ventilated worktop to keep your CPU extra cool



Custom Label

Personalize your carts with a worktop surface label of your choice

Bump Storage Accessories



Bump Storage Bar

The Bump Storage Rail mounts behind your worktop and lets you place frequently-used items close at hand



Universal Sharps Container*

Adjustable mount to accommodate common sharps containers



Hand Sanitizer Dispenser Mount*

Mounting plate for your sanitizer dispenser (ask sales rep about your dispenser type)



Equipment Wipes Mount*

Mounting bracket for your equipment wipes dispenser



Glovebox Holder*

Storage for boxes of gloves (works with tissue boxes too)

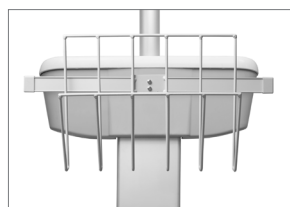
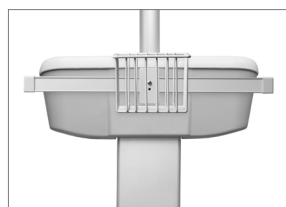


Chart Holder*

Locate your charts close at hand, behind the worktop



Wire Basket*

5" x 5" x 4" (12.7 cm x 12.7 cm x 10.16 cm) wire basket for storage



Diagnostic Station*

Add any combination of otoscope/ophthalmoscope station, specula dispenser, aneroid, and thermometer

Hummingbird Add-On Accessories

Vertical Rail Column Accessories



Glovebox Holder

Storage for boxes of gloves
(works with tissue boxes too)





Amico Accessories Inc. | 85 Fulton Way, Richmond Hill, ON L4B 2N4, Canada
Toll Free Tel: 1.877.264.2697 | Tel: 905.763.7778 | Fax: 905.763.8587
Email: accessories@amico.com | www.amico.com

Represented By: